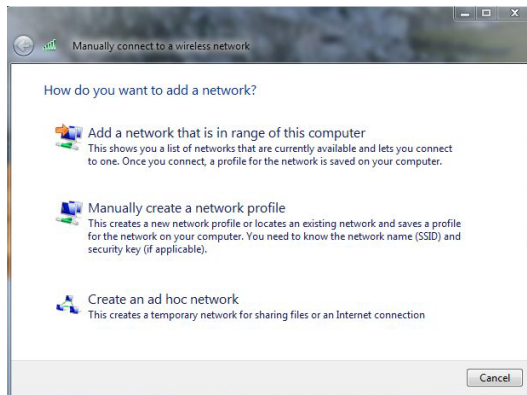


# Connecting a Vista Computer to the Riverpoint Wireless LAN

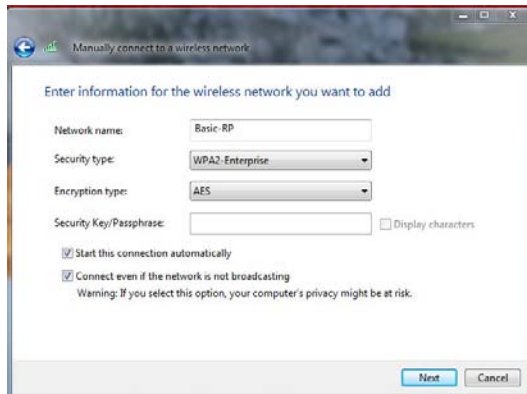
These instructions will guide you through the process of connecting a Vista computer to the Riverpoint Wireless LAN. Any device that is connected to the Riverpoint wireless LAN must support 802.1x authentication. You are responsible for obtaining a valid password and user name or ID and enabling your wireless radio.

## Connecting to a Network

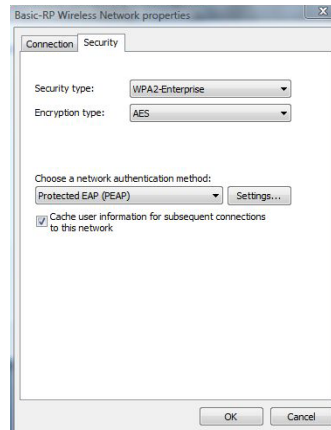
1. Open the Network and Sharing Center from the Control Panel, and click **Manage Wireless Networks**.
2. Click **Add** and click **Manually create a network profile** from the dialog box that appears.
4. Click **Change Connection Settings** from the dialog box that appears:
6. Check the Thawte Premium Server CA box, and click **Configure**:



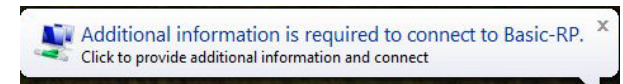
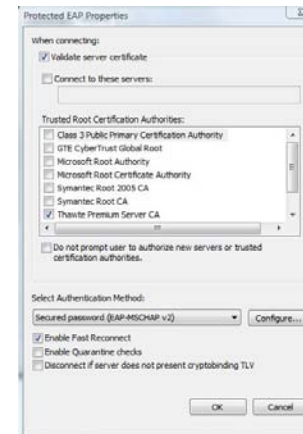
3. Fill the dialog box that appears with the following information:



5. Click the Security tab from the dialog box that appears, and click **Settings**:



7. Uncheck **Automatically use my Windows logon . . .** from the dialog box that appears, and click **OK** in each dialog box that appears. Close the Network and Sharing Center dialog box when it appears.
8. Click **Connect to a network**, and connect to Basic-RP. Click the dialog box that appears and enter your user name and password when prompted.



Congratulations! You are now connected to the Internet. If you are not, repeat steps 1 through 8.