

## Connecting a Vista Computer to the Riverpoint Wireless LAN

These instructions will guide you through the process of connecting a Vista computer to the Riverpoint Wireless LAN. For information about connecting an XP computer, refer to the instructions at <http://www.spokane.wsu.edu/campusresources/IT/content/WirelessDoc.pdf>.

### Before You Begin


**Note:** Any device that is connected to the Riverpoint wireless LAN must support 802.1x authentication.

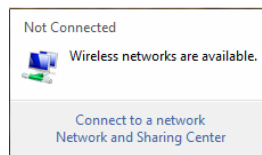
To access the wireless LAN from a Vista computer, you must:

- Enable your wireless radio.
- Have a valid EWU or WSU network ID (NID) and password.
- Connect to the network.
- Download and install Clean Access.

This document explains how to connect to a network and install Clean Access; however, you are responsible for obtaining a valid password/ID and enabling your wireless radio.

### Connecting to a Network

1. Click the wireless network icon , and select **Connect to a network** from the dialog box that appears.



2. Select the appropriate group (SSID) from the list that appears, and click **Connect**.



3. Select **Enter/select additional log on information** from the dialog box that appears.

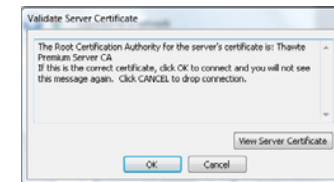


The Enter Credentials dialog box appears.

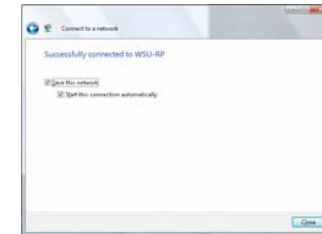


4. Type your user name and password, and click **OK**. The dialog box from Step 3 reappears. Repeat steps 3 and 4. The Validate Server Certificate dialog box appears.

**Note:** You may be required to repeat steps 3 and 4 several times.



5. Click **OK** to validate the server certificate. A message appears stating that you are successfully connected to the network you chose in step 2.



6. Be sure both boxes are checked, and click **Close**.
7. Continue with the steps for Installing Clean Access.

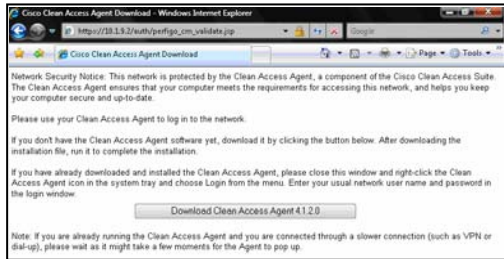
*Continued on back*

## Installing Clean Access

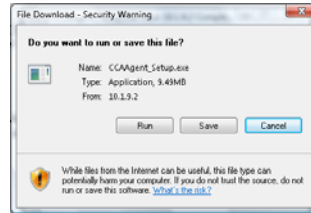
1. Open Internet Explorer. The Cisco Clean Access Authentication dialog box appears.



2. Enter your user name and password, and click **Continue**. The Cisco Clean Access Agent Download dialog box appears.

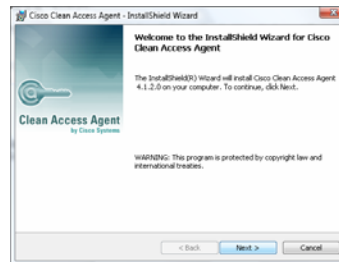


3. Click **Download Clean Access Agent**. The File Download – Security Warning dialog box appears.



4. Click **Run**. Several status screens appear, and then the Cisco Clean Access Agent – InstallShield Wizard appears.

**Note:** Click **Run** if an Internet Explorer security warning appears.



5. Click **Next** through the next two screens, and click **Install** on the third screen. The InstallShield Wizard status screen appears showing the progress of the download.

6. Click **Finish** when the InstallShield Wizard is complete. The Clean Access Agent login dialog box appears.



Type your user name and password, and click **Login**. A dialog box appears stating that you are successfully logged in to the network.

**Note:** Click **Yes** if a security alert appears.



7. Click **OK**. You are now connected to the Internet.

## Connectivity Disclaimer

Connecting to the Riverpoint wireless network has been tested by a variety of computers and users, and the instructions for connecting have been written with broad accommodation in mind. Most properly functioning computers should be able to connect to the Riverpoint wireless network if the necessary requirements are met and the instructions are followed correctly. Nonetheless, due to the vagaries of computer conditions and user interpretations, WSU Spokane cannot guarantee that all users will be able to successfully connect. In the event of difficulties, please refer to our online FAQ (<http://www.spokane.wsu.edu/wireless-faq>). WSU Spokane does not have a wireless help desk for further assistance.

## Security Disclaimer

The Riverpoint wireless network has been constructed with the user's security in mind. With network-ID authentication, digital certification, and tunneled encryption, the use of this wireless network should prove smooth and safe. Nonetheless, WSU Spokane does not accept any responsibility in the unlikely event that sensitive data (including personal or financial) is somehow 'sniffed' through surreptitious means by unknown parties bent on ill-intent. By logging on to the Riverpoint Wireless network, you acknowledge this disclaimer.